

April 10, 2020

COVID-19 Capacity Management Dashboard

Audience: Nurse Manager, Bed Planning, Transport Staff, EVS Dispatcher, Rapid Response Report Group (Hospital)

The Capacity Management dashboard provides a current snapshot of capacity across the house as well as expected inputs and outputs from patients in your ORs and EDs and for patients who are expected to be discharged today. It allows capacity managers, house supervisors, and executives to monitor expected demand, current occupancy, and potential capacity. With this information, stakeholders can plan to expedite discharges, plan EVS cleans, and review overcapacity units for staffing.

Features of this dashboard include:

- Current occupancy percentages across units and levels of care
- Expected demand from your EDs based on admit dispositions and overall census of your EDs
- Potential capacity based on discharge orders placed and expected discharge dates of today
- Current active and pending EVS requests by the level of care

Actionable Items

- Identify expected demand, current occupancy, and potential capacity
- Make informed unit staffing decisions and prioritize discharges
- Allocate EVS staff to where the highest turnover need is

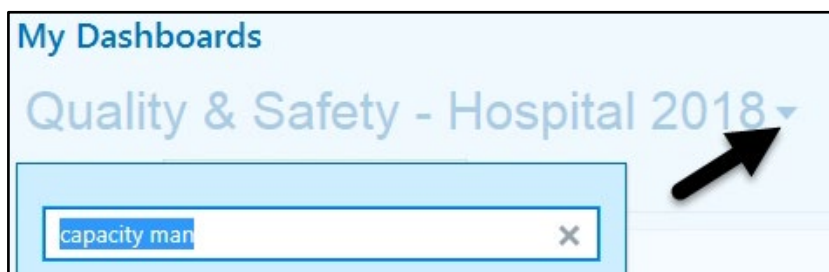
Let's Take a Look

The Dashboard will display information based on your allowed Service areas and the current login Context. It contains the following components:

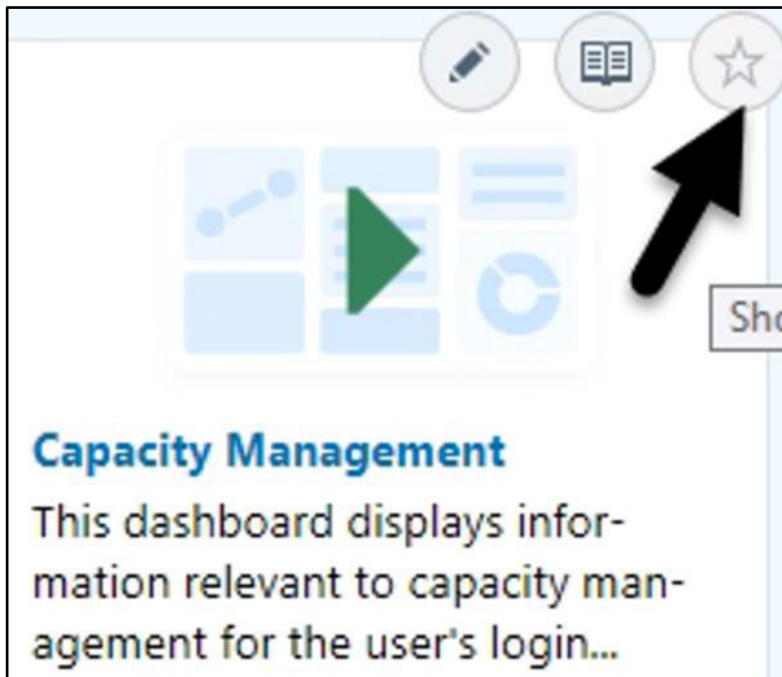
- Current EVS Requests
- Expected Admissions
- Expected Admits from ED
- Expected Admits from OR
- Expected Discharges
- Observation Metrics
- Occupancy Breakdown
- Off Service Patients
- Patients in ED

Add the Dashboard

Search for the **Dashboard** on your list as the **Capacity Management** dashboard has not been automatically added to your list.



Add as a **Favorite** by clicking on the **Star** button.



Dashboard Information

The information displayed is based on the user's login context and Epic security for authorized reporting area.

My Dashboards
Capacity Management

Expected Demand

Expected Admits from ED

2
ED Admits

2
Req > 6 Hrs

	Pts	RTM	Req > 6 Hrs
Bed Requested	1	0	1
Bed Assigned	0	0	0
Bed Ready	1	0	1
Overall	2	0	2

Patients in the ED

Expected Admits from OR: **1** OR Admits

Expected Admissions: **12** Exp Adm

	Exp Adm	Assigned	Unassigne
Acute/Gen	9	1	
SJSMED	4	0	
SJS5CVCU	2	0	
SJS3MED	3	1	
ICU	3	0	
SJS4BICU	2	0	
SJS2DICU	1	0	
Overall	12	1	

Current Occupancy

Occupancy Breakdown - ST JOHN'S HOSPITAL SPRINGFIELD
Data collected: Fri 4/10 12:06 PM

8% Occ % | **475** Open | **444** Exp Open

	Total	Open	Occ	Unavail	Occ %	Exp Adm	Exp Tx In	Exp Tx Out	Exp Disch	Disch Order	Exp Open
Acute/Gen	298	273	23	1	8%	9	0	8	3	0	276
Women/Child	153	142	11	0	7%	0	0	1	0	0	143
ICU	65	60	5	0	8%	3	1	0	0	0	56
SJSICUSU	19	17	2	0	11%	0	1	0	0	0	16
SJSCVICU	14	14	0	0	0%	0	0	0	0	0	14
SJS4AICU	18	17	1	0	6%	0	0	0	0	0	17
SJS4BICU	6	4	2	0	33%	2	0	0	0	0	2
SJS2DICU	8	8	0	0	0%	1	0	0	0	0	7
Unassigned	-	-	-	-	-	0	31	-	-	-	-
Overall	516	475	39	1	8%	12	32	9	3	0	444

Observation Metrics

5 Obs Patients | **5** Obs > 20 Hours

	Obs Patients	Max Hours in Obs	Obs > 20 Hours
Acute/Gen	5	1,007	5
SJSMED	2	912	2
SJS4MED	2	1,007	2
SJS3MED	1	524	1
Overall	5	1,007	5

Off Service Patients

Potential Capacity

Expected Discharges

0 Disch Order

	Disch Order	EDD Passed	EDD Today	Cc Di
Acute/Gen	0	3	0	
SJS6CVCU	0	1	0	
SJS3MED	0	2	0	
Women/Child	0	0	0	
SJSWMIF	0	0	0	
Overall	0	3	0	

Current EVS Requests: **17** EVS Requests

	EVS Requests	Assigned EVS	Unass
Acute/Gen	11	5	
SJSNEUR	1	0	
SJSURG	1	0	
SJSMED	3	2	
SJS4MED	2	1	
SJS5CVCU	1	1	
SJS3MED	3	1	
Women/Child	2	2	
SJSWMIF	1	1	
SJS4MED	1	1	
ICU	4	2	
SJSICUSU	1	0	
SJS4AICU	3	2	
Overall	17	9	

Component Details

Current Occupancy Breakdown

Occupancy Breakdown

This component displays a breakdown of the current occupancy of your organization.

This should be thought of as four distinct sections:

The current state of occupancy for your organization

- Total Beds
- Open Beds
- Occupied Beds
- Unavailable Beds
- Occupancy % 2

The number of patients expected to come into your organization

- Expected Admissions
- Expected Transfers In

The number of patients expected to leave your organization

- Expected Transfers Out
- Expected Discharges
- Discharge Order Today

Based on the first three the number of beds expected to be open

- Expected Open Beds

Observation Metrics

This component displays a breakdown of the patients in your organization who are currently in observation.

It displays:

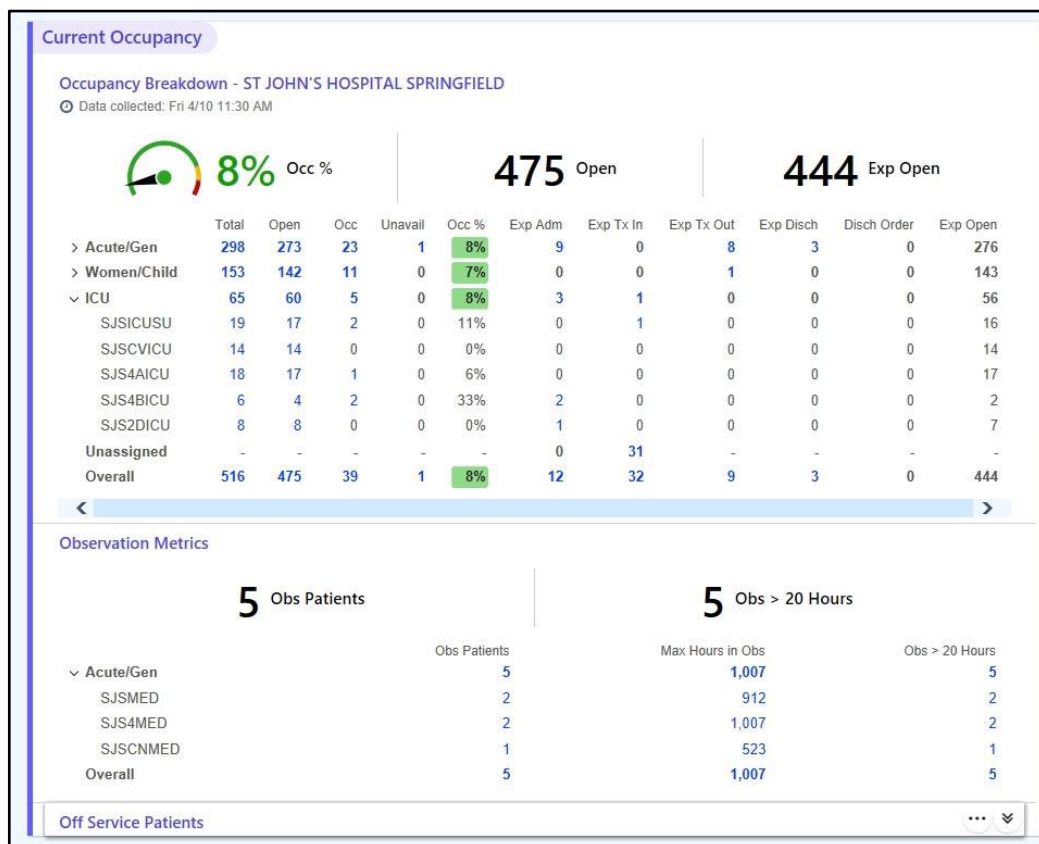
- The total number of patients who are currently in observation
- The time of the patient who has been in observation the longest
- The number of patients who have been in observation for more than 20 hours

Off Service Patients

This component displays information about off service patients in your organization.

It displays:

- The number of patients who are currently off service.



Expected Demand Group

Expected Admissions

This component displays a breakdown of the expected admissions into your organization.

It displays:

The total number of expected admissions into your organization

The number of expected admissions that have been assigned to a bed

The number of expected admissions that have not been assigned to a bed

Expected Admissions			
	Exp Adm	Assigned	Unassigned
12 Exp Adm			
✓ Acute/Gen	9	1	8
SJSMED	4	0	4
SJS5CVCU	2	0	2
SJS3MED	3	1	2
✓ ICU	3	0	3
SJS4BICU	2	0	2
SJS2DICU	1	0	1
Overall	12	1	11

Expected Admits from ED

This component displays patients who are expected to be admitted to an inpatient unit from the ED. These patients are broken up into three different sections indicating the status of their admission: **Bed Requested**, **Bed Assigned**, and **Bed Ready**.

Within those sections, the component will display:

The number of patients with expected admissions that match each section

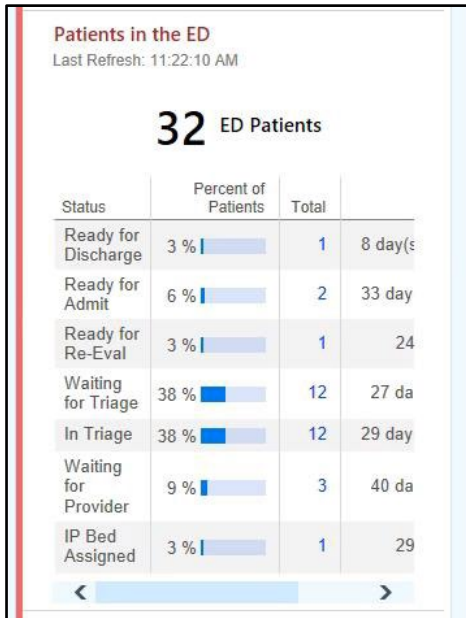
The number of patients who are Ready to Move

The number of patients who have had an inpatient bed requested for more than 6 hour

Expected Demand			
Expected Admits from ED			
	2		
	ED Admits		
	2		
	Req > 6 Hrs		
	Pts	RTM	Req > 6 Hrs
Bed Requested	1	0	1
Bed Assigned	0	0	0
Bed Ready	1	0	1
Overall	2	0	2

Patients in ED

Displays the number of patients in the emergency department, sorted into categories according to patient status. For each patient status, this component displays the percentage of the total number of patients who have that status, the total number of patients who have that status, and the average amount of time these patients have had each status. Note that this component will only include patients who are currently in a status that is listed in I DEP 49155 for your emergency department.

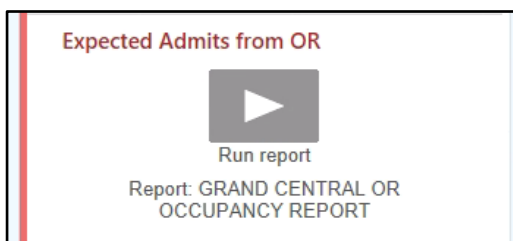


Expected Admits from OR

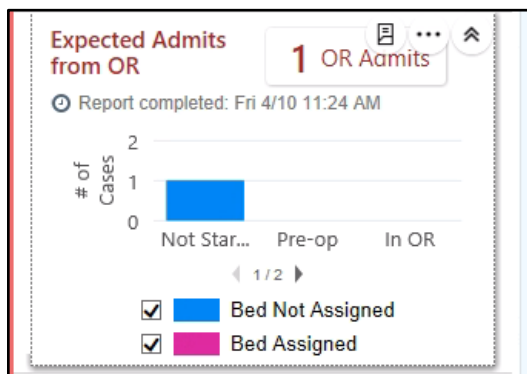
This component displays information about patients in the OR that are likely to be admitted to an inpatient unit. It breaks down those patients by the progress status of their case, as well as by whether or not they have been assigned to an inpatient bed.

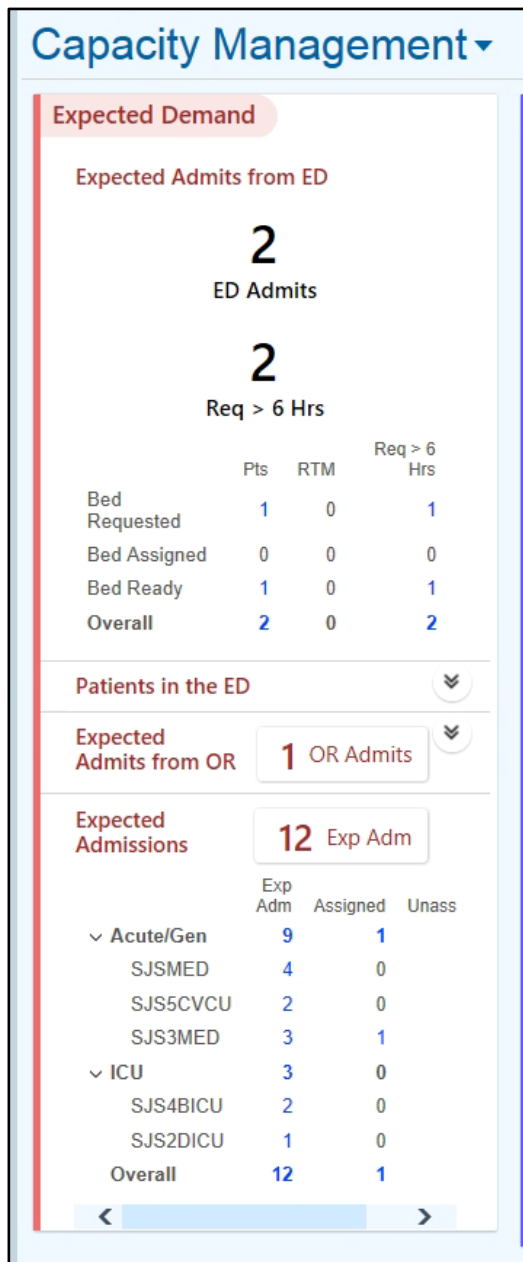
NOTE: This is only available if you have OR location security.

Run the report as needed



The report will display the information.





Potential Capacity Group

Expected Discharges

This component displays information about discharges that are expected to happen in your organization.

It displays:

- The number of patients who have an expected discharge date of today
- The number of patients who have an expected discharge date that has passed
- The number of patients who have a signed discharge order for today
- The number of discharges that have already been completed today

Current EVS Requests

This component displays information about active EVS requests in your organization.

It displays:

- The number of EVS requests that are currently active
- The number of EVS requests that have been assigned to a housekeeper
- The number of EVS requests that have not been assigned to a housekeeper

Potential Capacity

Expected Discharges ⋮ ⬆

0 Disch Order

	Disch Order	EDD Passed	EDD Today	Comp Disch
✓ Acute/Gen	0	3	0	1
SJS6CVCU	0	1	0	0
SJS3MED	0	2	0	1
✓ Women/Child	0	0	0	1
SJSWMIF	0	0	0	1
Overall	0	3	0	2

Current EVS Requests 17 EVS Requests

	EVS Requests	Assigned EVS	Unassigned EVS
✓ Acute/Gen	11	5	6
SJSNEUR	1	0	1
SJSURG	1	0	1
SJSMED	3	2	1
SJS4MED	2	1	1
SJS5CVCU	1	1	0
SJS3MED	3	1	2
✓ Women/Child	2	2	0
SJSWMIF	1	1	0
SJSLD	1	1	0
✓ ICU	4	2	2
SJSICUSU	1	0	1
SJS4AICU	3	2	1
Overall	17	9	8

Click on the **blue hyperlink** to see details.

Report Viewer

ST JOHN'S HOSPITAL SPRINGFIELD -
Acute/General - Completed Discharges (1)

Patient	Discharged	Expected Discharge	
OrdersTST, Brittany	04/10/2020 09:01 AM		Select a patient to view more information.

Potential Capacity

Expected Discharges

0 Disch Order

	Disch Order	EDD Passed	EDD Today	Comp Disch
✓ Acute/Gen	0	3	0	1
SJS6CVCU	0	1	0	0
SJS3MED	0	2	0	1
✓ Women/Child	0	0	0	1
SJSWMIF	0	0	0	1
Overall	0	3	0	2