

ART AND

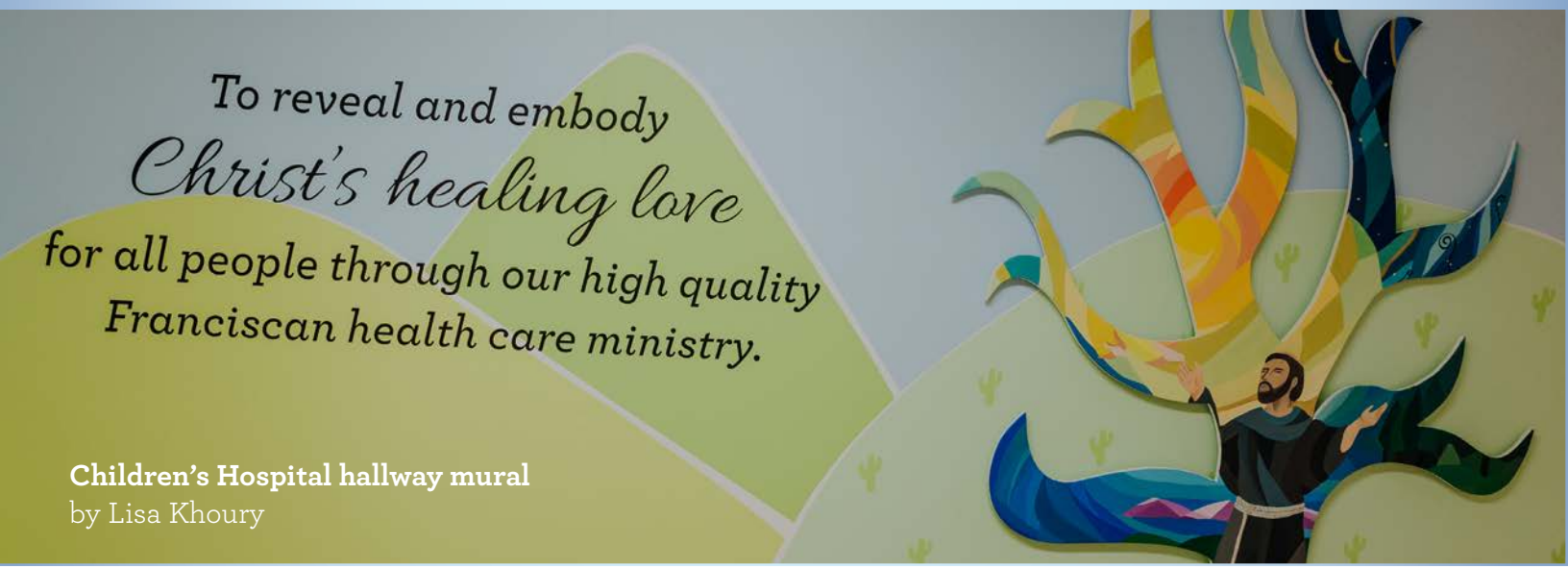
# Healing

**Saint John the Evangelist**  
unknown artist  
*commissioned by the Hospital Sisters of  
St. Francis in the early 1900s*



**HSHS**  
**St. John's**  
**Foundation**

**HEALING ARTS PROGRAM**



Children's Hospital hallway mural  
by Lisa Khoury

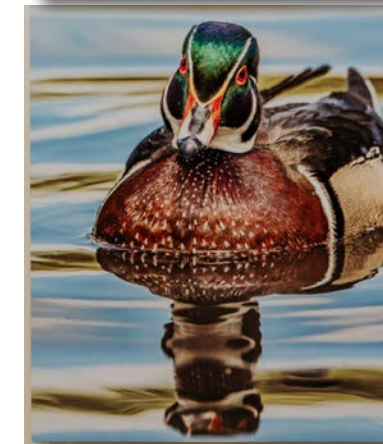
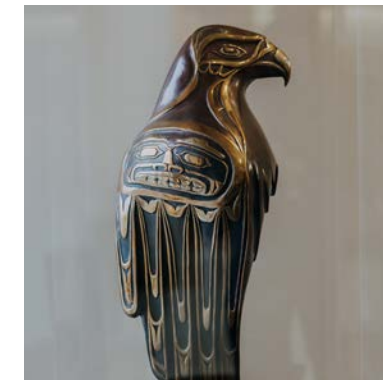
**Art should meet these established goals:**

- Quality of design, execution and framing
- Contributes to healing environment
- Increases patient satisfaction
- Strengthens brand awareness
- Enhances way finding
- Invites sensory stimulation
- Inspires social interaction and builds community
- Connects to place
- Relieves stress (calming, positive)
- Creates a source of pride for staff and residents, boostS employee morale
- When possible is integrated into architecture
- Easily maintained
- Appropriate for diverse physical and cognitive abilities

**Process for reviewing and accepting gifts of art:**

**General Process:** Upon receipt of a Gift of Art Disclosure Form, the art committee may request to see and inspect the actual artwork and/or documents pertaining to the work of art. Upon finalizing its review and based on the goals and review criteria below, the panel will accept or reject the work of art.

**Sculpture:** Indoor and outdoor sculptures will be considered.



**Leave a legacy of fine art and support the healing ministry of HSHS St. John's Hospital.**

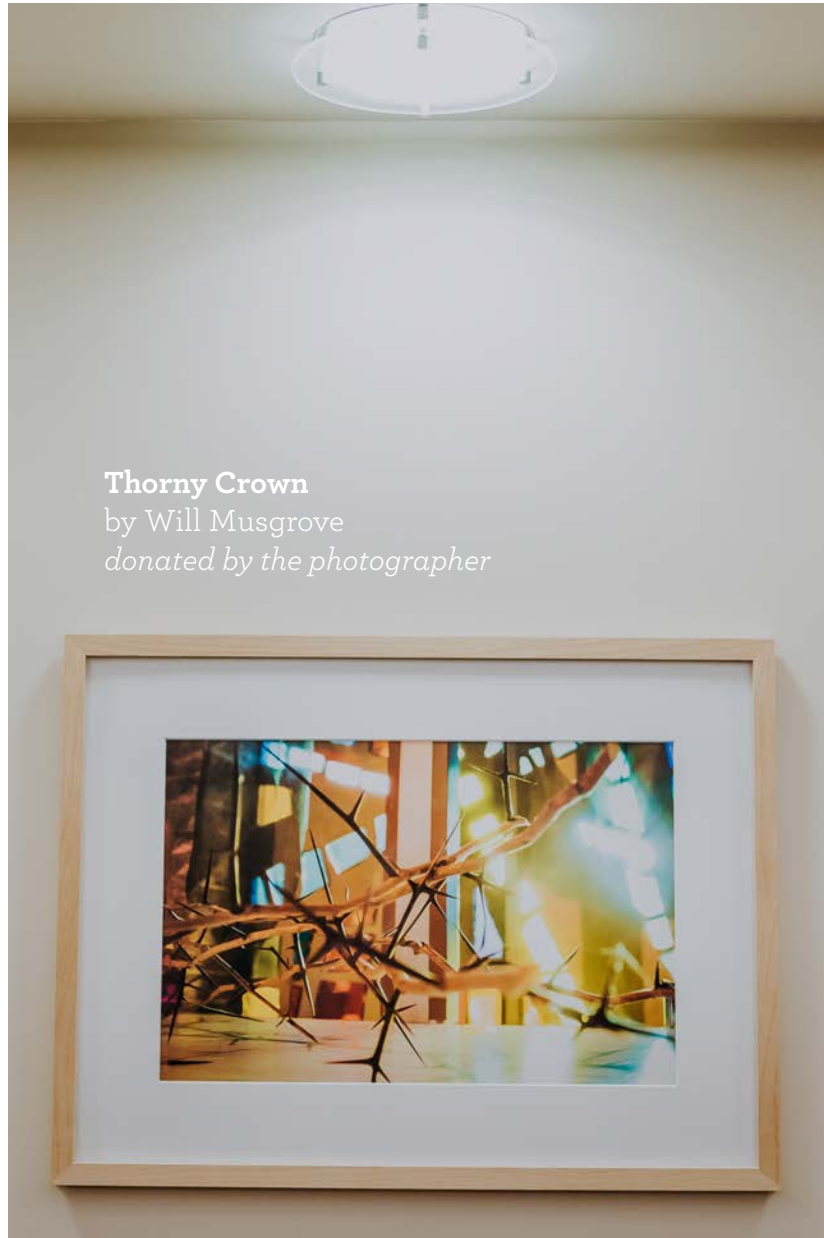
Donate works of fine art to HSHS St. John's Hospital where they will be cared for, appreciated and make an impact in others' lives. Works displayed at HSHS St. John's Hospital follow a "healing" criteria and come to the hospital in many ways. Some are donated by the artist, others are pieces from home collections and others are purchases or commissions selected specifically for St. John's collection.

**Criteria for Accepting Gifts of Art**

The art committee seeks work that is one-of-a-kind or part of any original series. Reproductions of original works of art are not considered eligible for acceptance. The proposed gift of art must contribute an aesthetic benefit to the art collection.

As a general rule, the Art Committee will identify work that fits within **evidence based art selection criteria:**

- **Waterscapes** (calm or non-turbulent water)
- **Landscapes** (with visual depth or open foreground, trees with broad canopy, Savannah landscapes, verdant vegetation or positive cultural artifacts)
- **Flowers** (familiar, healthy and fresh, in natural settings with open foreground),
- **Figurative art** (depicting emotionally positive faces, diverse and leisurely in nature)
- **Wildlife** (depicts healthy animals engaged in positive activities)
- **Color palettes** (calming, natural colors)



**Thorny Crown**  
by Will Musgrove  
donated by the photographer



**School's Out, sculpture**



**Lithograph collection**



**Comfort, sculpture**

"COMFORT"  
By A. J. Driscoll  
In Loving Memory of  
Shirley Sankey



**Man of Wisdom**

by, Nicholas Mukomberanwa

*donated by Dr. Richard and Bette Bilinsky*



**HSHS  
St. John's  
Foundation**

**Your gift will make a direct, positive difference.**

To learn more about charitable or fine art giving, you may contact HSHS St. John's Foundation at 217-757-6555 or email [Ali.Farmer@hshs.org](mailto:Ali.Farmer@hshs.org)

HSHS St. John's Foundation | 800 East Carpenter, Springfield, IL 62769 | 217.757.6804